



MOULDING YOUR WORLD WITH ENDLESS POSSIBILITIES.

taiga
building products

Whatever it takes.
taigabuilding.com





PREMIUM PRIME MOULDINGS DISTRIBUTED BY TAIGA BUILDING PRODUCTS

Taiga mouldings are manufactured from the finest, medium-density fibreboard (MDF) available and treated with a unique coating that accepts any type of high-quality trim paint. The process employed in the actual moulding and priming is state-of-the-art, when compared to existing industry standards. Many hours of research, development and laboratory tests for uniformity, strength and other structural qualities have produced a product that is virtually unsurpassed.

LET YOUR HOME INSPIRE YOUR CREATIVITY.
ADD STYLE AND BEAUTY WITH TAIGA PREMIUM
PRIME MOULDINGS.

FOR MORE INFORMATION VISIT
TAIGABUILDING.COM

PLEASE NOTE THAT NOT ALL PRODUCTS MAY BE AVAILABLE IN YOUR REGION, CONTACT YOUR LOCAL TAIGA REPRESENTATIVE FOR MORE INFORMATION. TAIGA IS A WHOLESALE DISTRIBUTION COMPANY, WE DO NOT SELL DIRECTLY TO THE GENERAL PUBLIC. PLEASE CONTACT THE NEAREST RETAILER FOR PRODUCT AND PRICING INFORMATION.





PREMIUM PRIME MDF

SPECIES PROFILE

Medium Density Fibreboard (MDF) is part of a family of environmentally friendly products known as Engineered Wood.

Typically, wood shavings, chips and sawdust that remain after a tree is milled into lumber are collected, cleaned and refined to create uniform particles or fibres. Excess moisture is removed and an adhesive resin is added. The combination of 92% wood and 8% resin, on average, is formed into long thick mats, which are then compressed under intense heat and pressure. Progress at each stage is closely monitored by computers, which can measure slight variations that even the human eye cannot detect.

The resulting wood panels are laboratory-tested for uniformity, strength, screw-retention and other structural qualities, as required to meet the stringent industry standards for furniture and cabinet-grade wood panel products.



3

2

1

5

4

MOULDINGS GALLERY

REFERENCE GUIDE

1 CASINGS are moulded or surfaced on all four sides in a variety of widths and thicknesses for trimming door and window openings.

See Ultralight/Pacprime Light on pages 6, 7 and 8, see Primed Pine on page 9.

2 CROWNS are used as a decorative element to connect surfaces which meet at an angle. Installing crown mouldings is an effective way to apply elegance and character to a traditional looking room.

See Ultralight/Pacprime Light on pages 18, see Primed Pine Finger Joint on page 19.

3 ARCHITRAVES are classic, Greek-style architectural elements that are used to accent the top of a door, window or other openings.

See page 15.

4 BASEBOARDS are base mouldings around the perimeter of a room at the point of intersection of the walls and finished floor.

See Ultralight/Pacprime Light on page 10 and 11, see Primed Pine Finger Joint on page 12.

5 CHAIR RAILS are used as decorative elements or dividers between wall coverings such as wallpaper, paint, or wainscoting.

See Ultralight/Pacprime Light on pages 23, see Primed Pine Finger Joint on page 22.

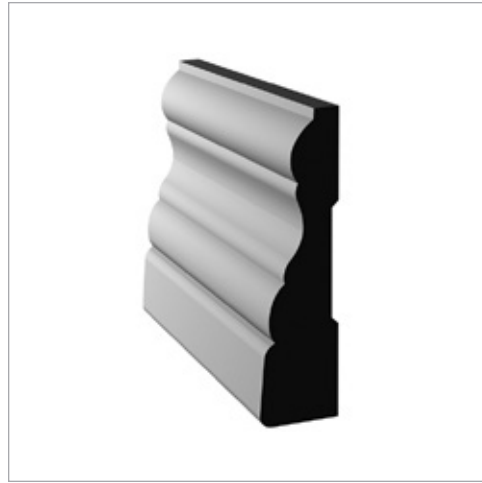
CASINGS



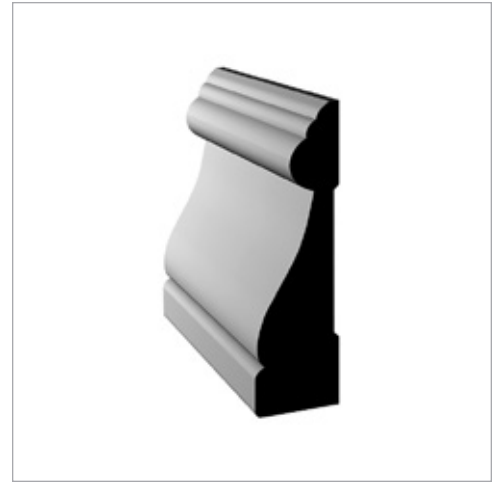
T-100
1/2" X 2-1/2"
PCS/BDL: 8/14'

T-101
5/8" X 2-1/2"
PCS/BDL: 8/14'

T-131
5/8" X 3"
PCS/BDL: 6/15'



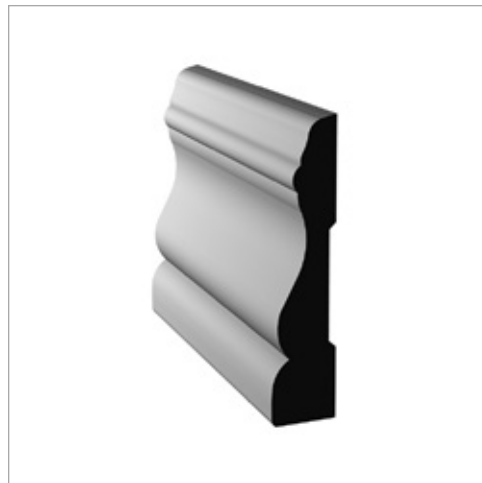
T-111
3/4" X 2-3/4"
PCS/BDL: 6/15'



T-112
1" X 3-1/2"
PCS/BDL: 2/16'



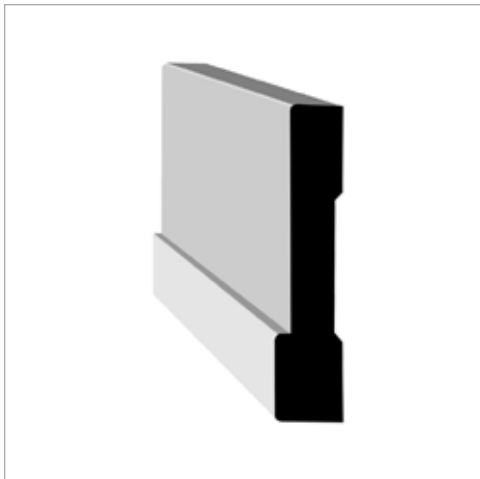
T-121
11/16" X 2-3/4"
PCS/BDL: 6/15'



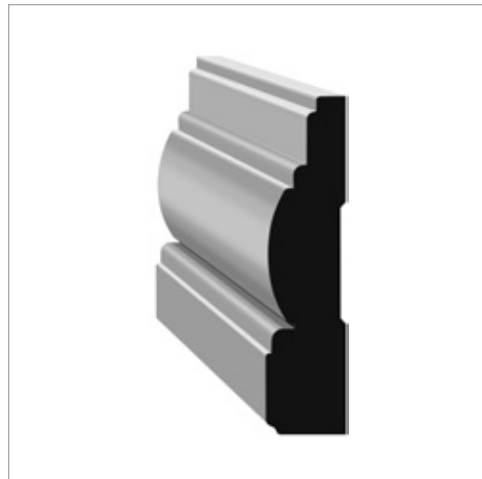
T-127
5/8" X 2-3/4"
PCS/BDL: 6/15'



T-129
1-1/4" X 4"
PCS/BDL: 4/16'



T-134
11/16" X 3-1/4"
PCS/BDL: 6/16'



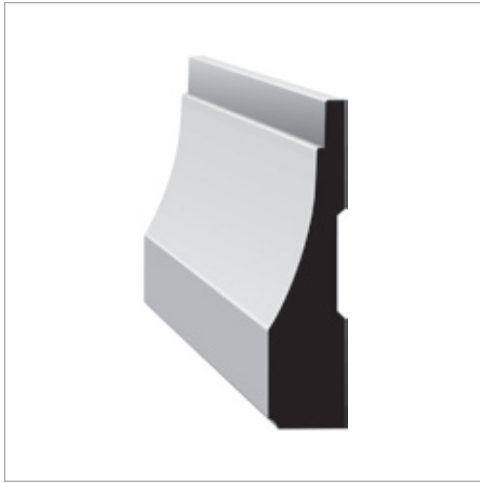
T-141
7/8" X 3-1/2"
PCS/BDL: 4/16'

T-142
1" X 4-1/2"
PCS/BDL: 4/16'



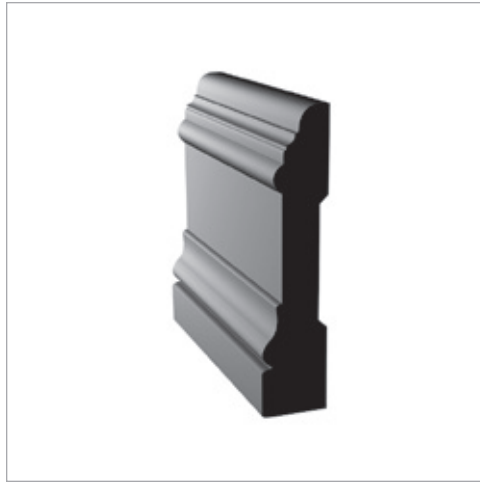
T-1129
1" X 3-1/4"
PCS/BDL: 4/16'

CASINGS

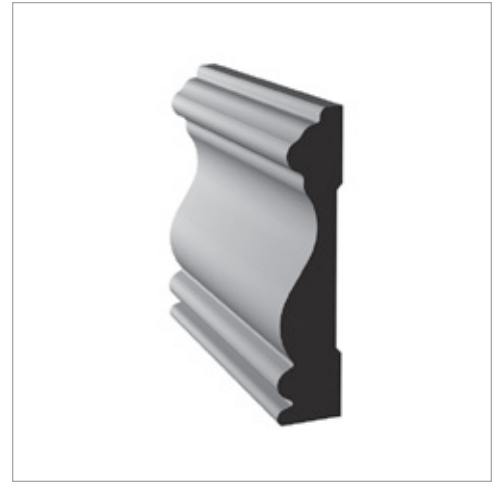


T-144B2
1" X 4"
PCS/BDL: 4/16'

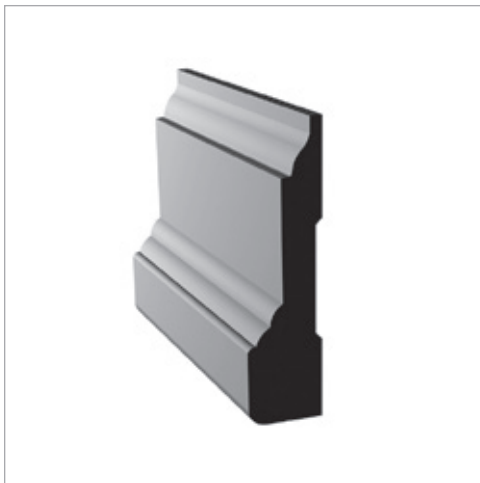
T-144C2
3/4" X 3"
PCS/BDL: 6/16'



T-145
3/4" X 3-1/2"
PCS/BDL: 6/16'



T-151
3/4" X 3-1/4"
PCS/BDL: 6/16'



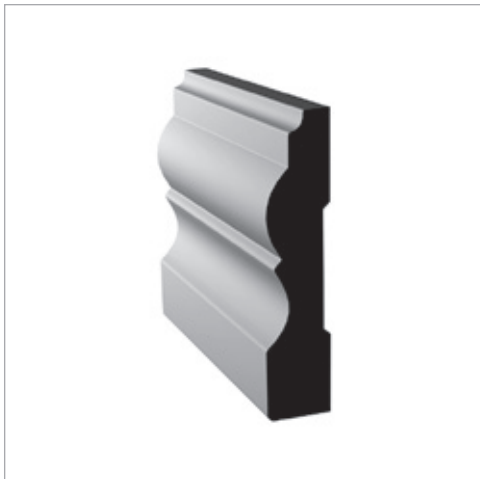
T-143
3/4" X 2-3/4"
PCS/BDL: 6/15'



T-179
3/4" X 3-1/4"
PCS/BDL: 6/15'



T-181
3/4" X 3-1/2"
PCS/BDL: 6/15'



T-183
3/4" X 3-1/4"
PCS/BDL: 6/15'

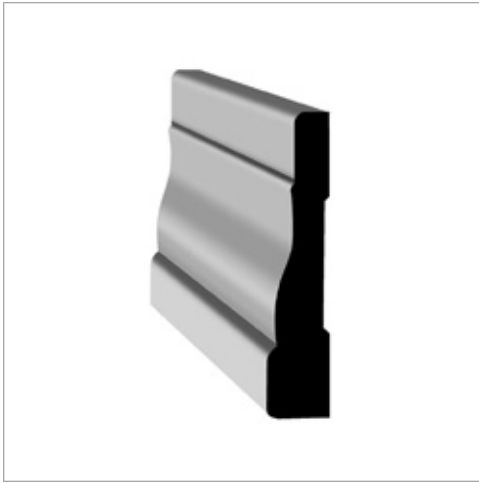


T-191
5/8" X 3-1/2"
PCS/BDL: 6/16'

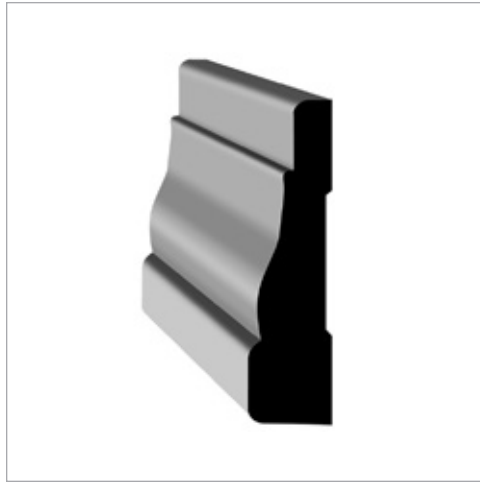


T-158
11/16" X 3-1/2"
PCS/BDL: 6/16'

CASINGS



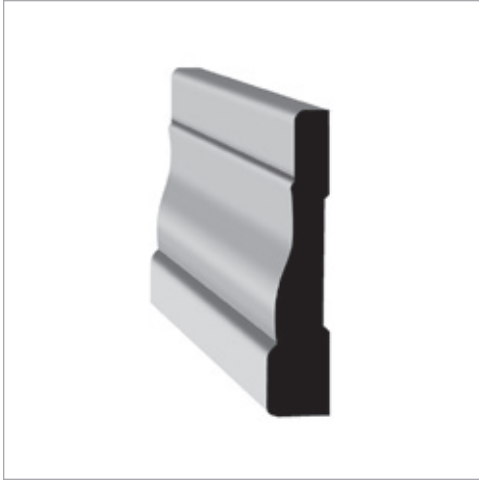
T-356
1/2" X 2-1/4"
PCS/BDL: 10/14'



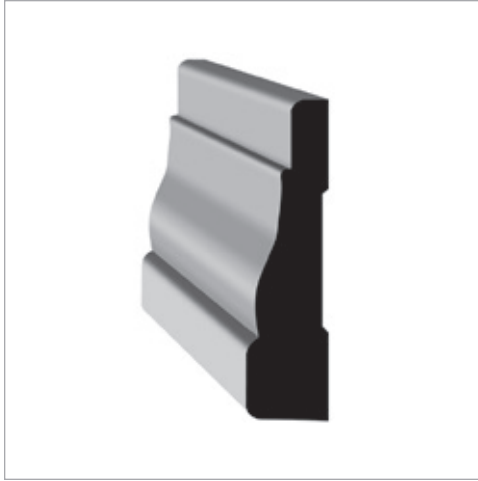
T-WM356
5/8" X 2-1/4"
PCS/BDL: 8/14'



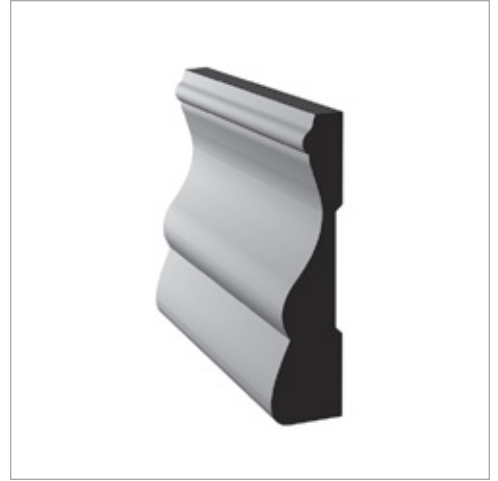
FINGER JOINT CASING



P-356
7/16" X 2-1/4"
PCS/BDL: 20/14'



P-WM356
11/16" X 2-1/4"
PCS/BDL: 12/14'



P-107
11/16" X 2-5/8"
PCS/BDL: 12/15'



P-3000
7/16" X 1-7/16"
PCS/BDL: 30/14'



P-3002
7/16" X 2-1/4"
PCS/BDL: 20/14'

BASEBOARDS



T-273
5/8" X 5-1/2"
PCS/BDL: 4/16'

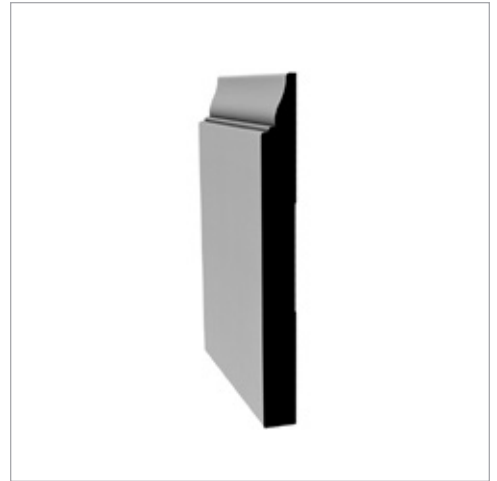
T-274
5/8" X 7-1/4"
PCS/BDL: 4/16'



T-306
5/8" X 5-1/4"
PCS/BDL: 4/16'

T-307
5/8" X 7-1/4"
PCS/BDL: 4/16'

T-340
5/8" X 4-1/8"
PCS/BDL: 4/16'



T-330A
5/8" X 5-1/4"
PCS/BDL: 4/16'

T-331
5/8" X 7-1/4"
PCS/BDL: 4/16'



T-320
1/2" X 3-1/4"
PCS/BDL: 6/16'



T-309
5/8" X 3-1/4"
PCS/BDL: 6/16'

T-310
5/8" X 4-1/8"
PCS/BDL: 6/16'

T-311
5/8" X 5-1/4"
PCS/BDL: 4/16'

T-313
5/8" X 6-1/2"
PCS/BDL: 4/16'

T-312
5/8" X 4-1/4"
PCS/BDL: 4/16'



T-316
1/2" X 4-1/4"
PCS/BDL: 6/16'

T-318
1/2" X 5-1/4"
PCS/BDL: 6/16'

T-319
1/2" X 7-1/4"
PCS/BDL: 4/16'

T-323
1/2" X 3-1/4"
PCS/BDL: 6/16'

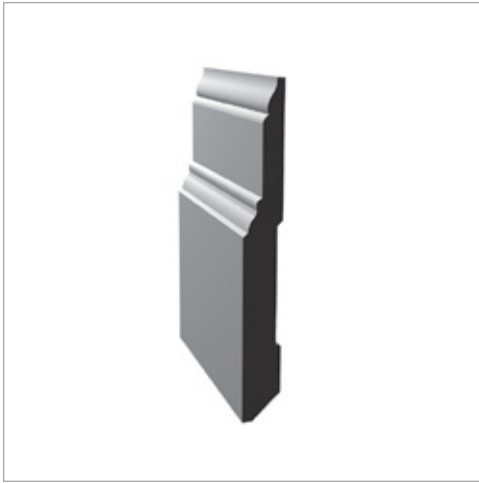


T-301
1/2" X 3-1/4"
PCS/BDL: 8/14'

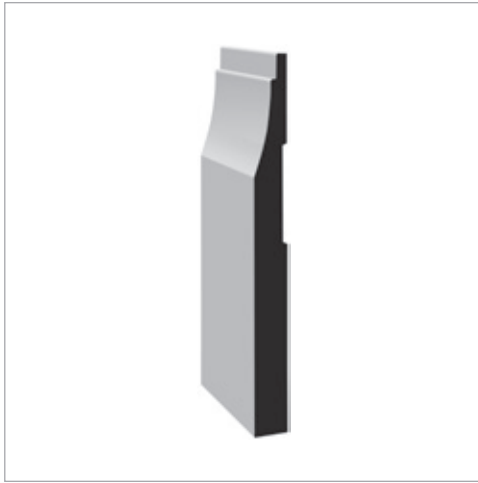
T-302
1/2" X 3-1/2"
PCS/BDL: 6/16'

T-325
1/2" X 4"
PCS/BDL: 6/16'

BASEBOARDS



T-334
5/8" X 5-1/2"
PCS/BDL: 4/16'



T-346A2
5/8" X 5-1/4"
PCS/BDL: 6/16'

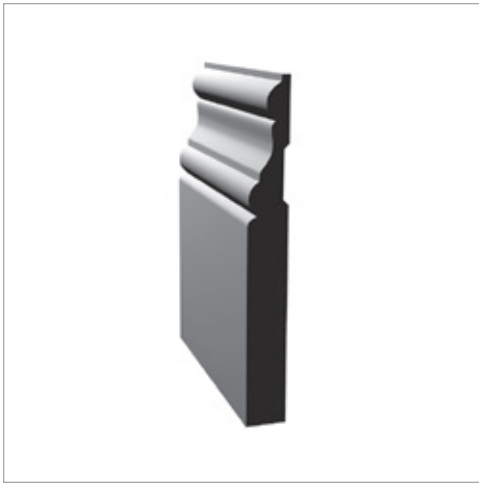
T-346B2
11/16" X 7-1/4"
PCS/BDL: 4/16'

T-346C2
11/16" X 9"
PCS/BDL: 4/16'



T-391A
1/2" X 5"
PCS/BDL: 4/16'

T-392
1/2" X 7-1/4"
PCS/BDL: 4/16'



T-314
5/8" X 5-1/4"
PCS/BDL: 4/16'



T-347
3/4" X 7"
PCS/BDL: 4/16'

T-349
3/4" X 9"
PCS/BDL: 2/16'



T-361
5/8" X 5-1/4"
PCS/BDL: 4/16'

T-363
5/8" X 7-1/4"
PCS/BDL: 4/16'



T-327
1/2" X 4-1/2"
PCS/BDL: 4/16'

T-357
1/2" X 5-1/4"
PCS/BDL: 6/16'

T-359
1/2" X 5-1/2"
PCS/BDL: 4/16'

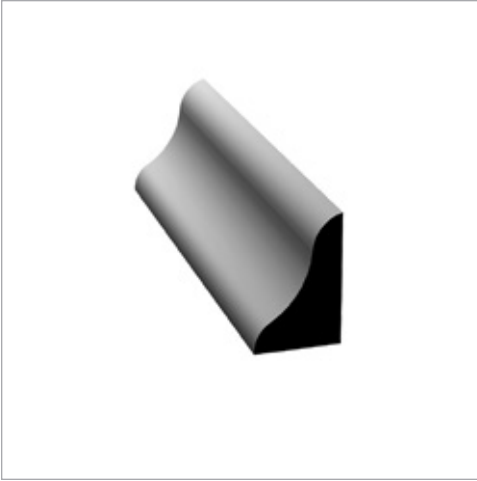
T-362
1/2" X 6"
PCS/BDL: 4/16'

T-364
1/2" X 7-1/4"
PCS/BDL: 4/16'

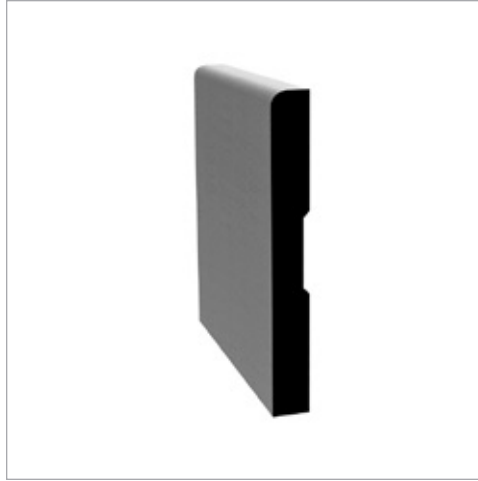
T-365E
1/2" X 9-1/4"
PCS/BDL: 4/16'

T-366
1/2" X 11-1/4"
PCS/BDL: 4/16'

FINGER JOINT BASEBOARDS



P-201
1/2" X 3/4"
PCS/BDL: 20/16'

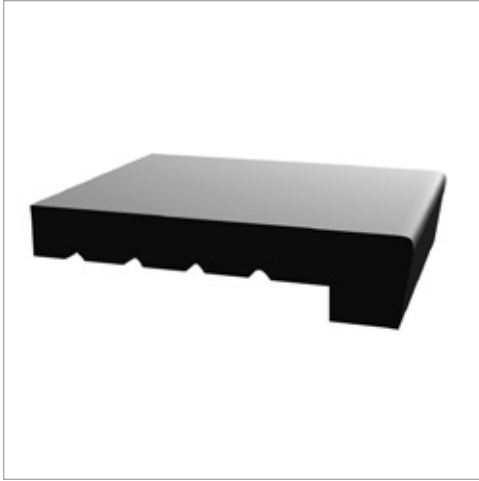


P-3112
7/16" X 3-1/4"
PCS/BDL: 20/16'





FINGER JOINT WINDOW STOOL



P-3410
1-1/4" X 5-1/4"
PC./16'

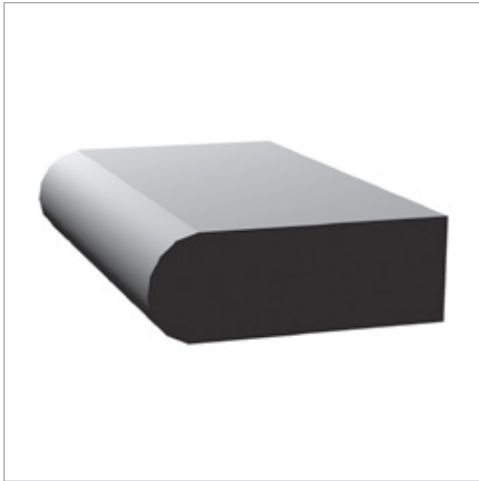
P-3411
1-1/4" X 7-1/4"
PC./16'

P-3415
1-1/4" X 12-7/8"
PC./16'

P-3413
1-3/4" X 7-1/2"
PC./16'



ARCHITRAVES



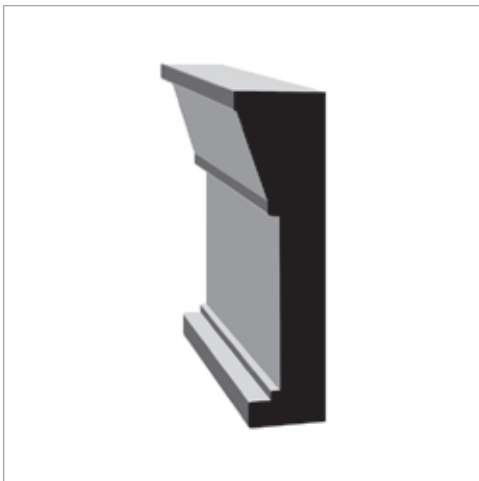
T-9532
1/2" X 1-3/8"
PCS/BDL:10/10'



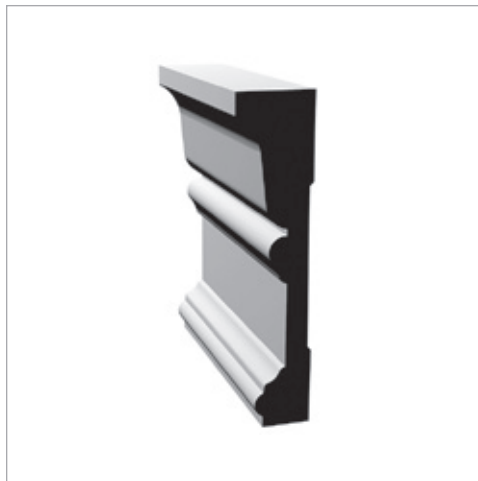
T-5000
1-1/4" x 3-3/4"
PCS/BDL: 4/16'



T-5010
1-1/4" x 4-1/4"
PCS/BDL: 4/16'



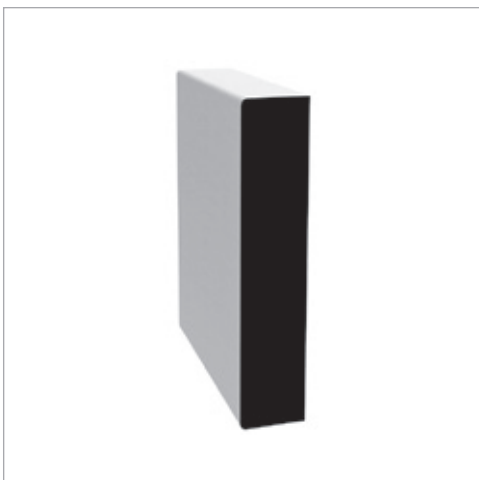
T-5015
1-1/2" X 5-1/2"
PCS/BDL: 4/12'



T-5020
1-1/4" X 5-1/4"
PCS/BDL: 4/16'



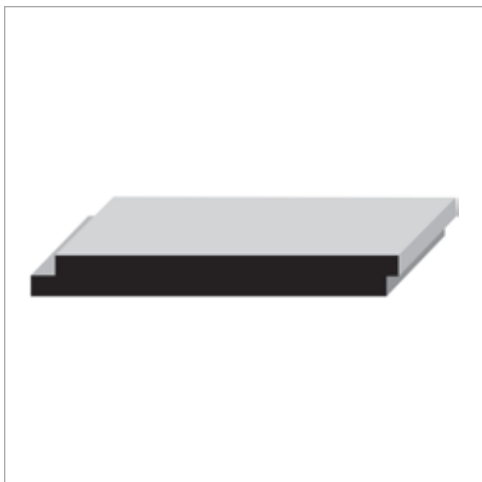
T-5025
1-1/4" X 5-1/4"
PCS/BDL: 4/16'



T-530 1" X 3-1/2" PC./16"	T-545 1" X 4-1/2" PC./16"	T-555 1" X 5-1/2" PC./16"	T-575 1" X 7-1/4" PC./16"
--	--	--	--



SHIPLAP



SPECIAL ORDER: PLEASE CONTACT YOUR LOCAL TAIGA REPRESENTATIVE FOR MORE INFORMATION.

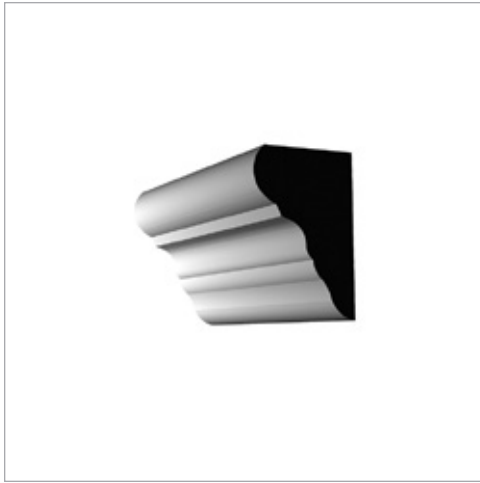
1x4 SHIPLAP
5/8" x 3-1/2"
PC./16'

1x6 SHIPLAP
5/8" x 5-1/2"
PC./16'

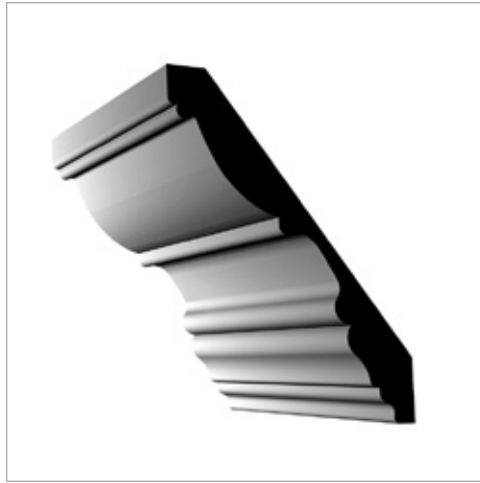
1x8 SHIPLAP
5/8" x 7-1/4"
PC./16'



CROWNS



T-409
1-1/4" X 1-7/8"
PCS/BDL: 12/16'



T-412
5/8" X 4-1/2"
PCS/BDL: 4/16'

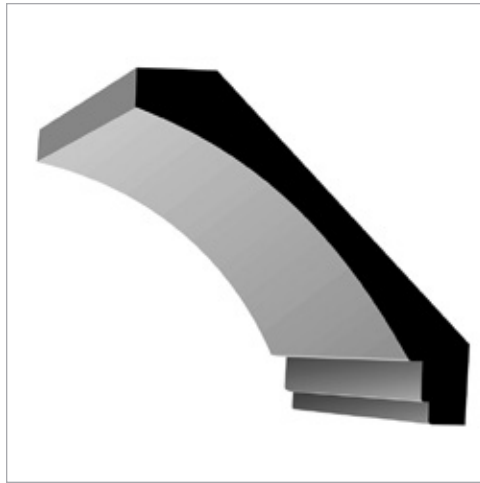


T-421
7/8" X 6-15/16"
PCS/BDL: 4/16'



T-413
1-1/4" X 6-5/16"
PCS/BDL: 2/16'

T-424
1" X 4-1/2"
PCS/BDL: 4/16'



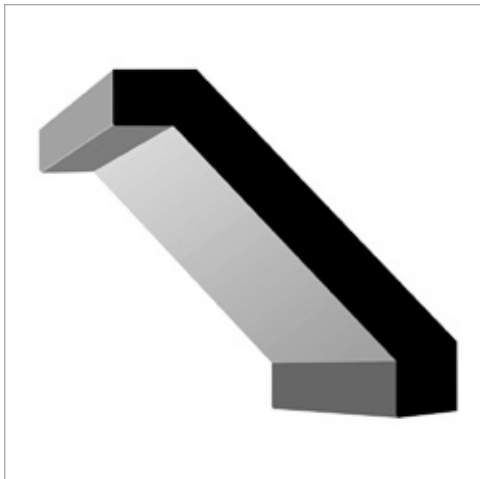
T-429
1-1/4" X 5-1/4"
PCS/BDL: 4/16'

T-430
1-1/4" X 6-3/4"
PCS/BDL: 4/16'



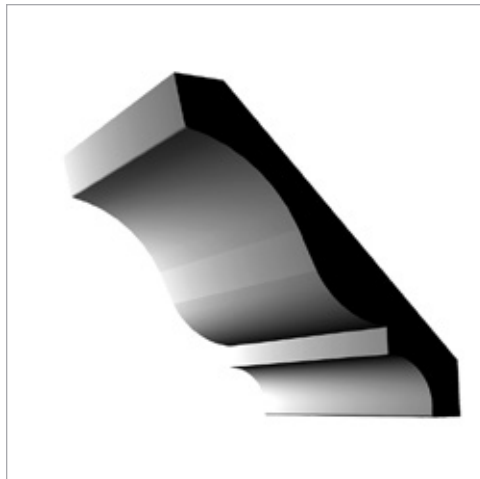
T-438
1-1/4" X 5-1/4"
PCS/BDL: 2/16'

T-439
1-1/4" X 7-1/4"
PCS/BDL: 2/16'



T-441
1-1/4" X 5-3/4"
PCS/BDL: 2/16'

T-442
1-1/4" X 7-1/4"
PCS/BDL: 2/16'



T-451
1/2" X 3-1/4"
PCS/BDL: 6/16'

T-470
5/8" X 4-1/4"
PCS/BDL: 8/16'

T-471
5/8" X 5-1/4"
PCS/BDL: 5/16'



T-477
1" X 5-1/4"
PCS/BDL: 2/16'

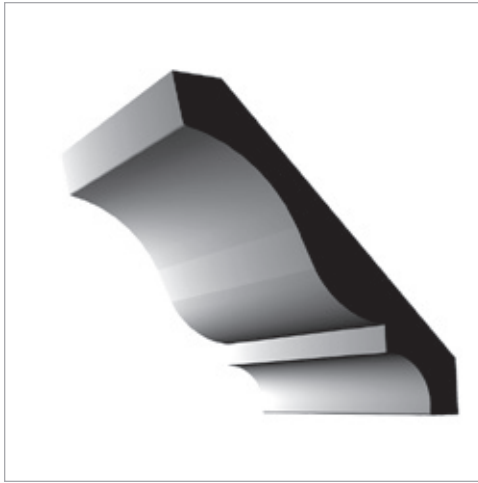
T-478
1-1/4" X 6-3/4"
PCS/BDL: 2/16'

FINGER JOINT CROWNS



P-3240
3/8" X 5/8"
PCS/BDL: 30/14'

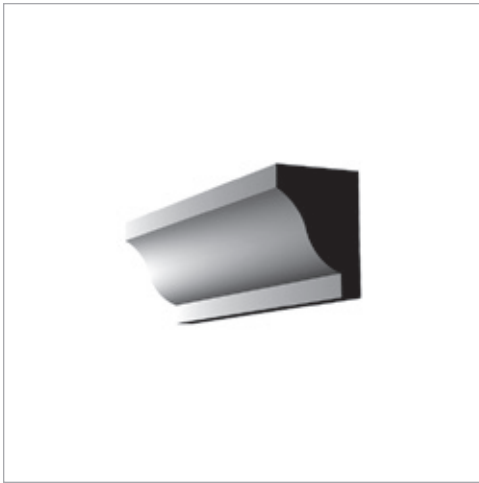
P-L3240
5/16" X 1/2"
PCS/BDL: 30/14'



P-47
9/16" X 4-5/8"
PCS/BDL: 8/16'



P-51
9/16" X 3-1/4"
PCS/BDL: 10/16'



P-3242
1/2" X 3/4"
PCS/BDL: 20/16'



P-3244
9/16" X 1-1/4"
PCS/BDL: 20/16'

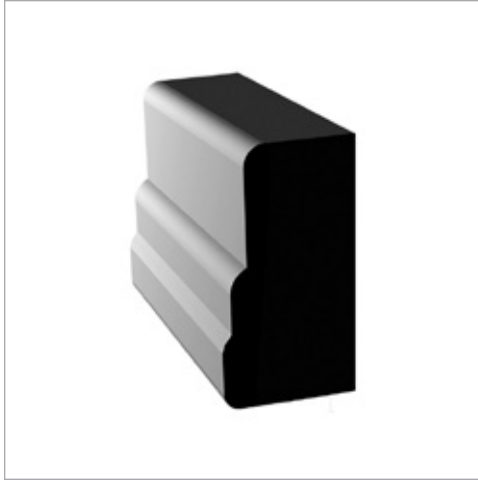


P-3248
1-1/4" X 2-1/4"
PCS/BDL: 8/16'

FINGER JOINT BRICK MOULDS



P-180
1-1/4" X 2"
PCS/BDL: 8/85" OR 8/170"



P-303
1-1/4" X 1-1/2"
PCS/BDL: 8/84" OR 8/100" OR 8/14'



P-3322
1-1/4" X 2-1/4"
PCS/BDL: 8/85" OR 8/170"

FINGER JOINT T-BAR



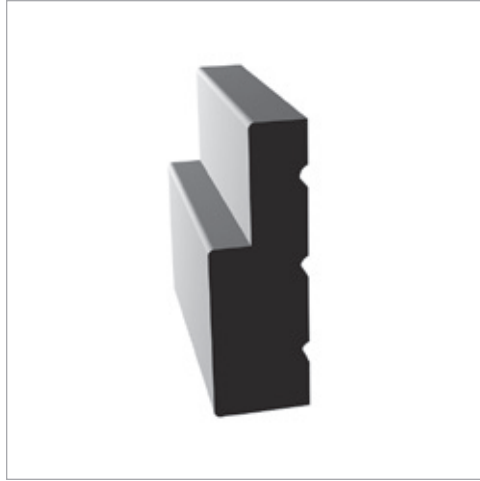
T-BAR
2-1/2" X 3-1/2"
PCS/BDL: 84" OR 98"

T-BAR
3-3/16" X 3-11/16"
PCS/BDL: 98"

T-BAR
2-1/2" X 4-1/2"
PCS/BDL: 100"

INTERIOR T-BAR
2-3/8" X 2-7/8"
PCS/BDL: 7'

FINGER JOINT JAMB



EXTERIOR KERF JAMB

4-9/16" 1-1/4" X 4-9/16" X 2-1/8" KERF	5-1/4" 1-1/4" X 5-1/4" X 2-1/8" KERF
6-9/16" 1-1/4" X 6-9/16" X 2-1/8" KERF	7-1/4" 1-1/4" X 7-1/4" X 2-1/8" KERF
8-1/2" 1-1/4" X 8-1/2" X 2-1/8" KERF	8-7/8" 1-1/4" X 8-7/8" X 2-1/8" KERF

INTERIOR RAB JAMB

4-9/16" 1-1/4" X 4-9/16" X 1-3/8" RAB'	4-9/16" 1-1/4" X 4-9/16" X 1-3/4" RAB	4-13/16" 1-1/4" X 4-13/16" X 1-3/8" RAB	5" 1-1/4" X 5" X 1-3/8" RAB
5-1/4" 1-1/4" X 5-1/4" X 1-3/8" RAB	5-1/4" 1-1/4" X 5-1/4" X 1-3/4" RAB	6-9/16" 1-1/4" X 6-9/16" X 1-3/8" RAB	
6-9/16" 1-1/4" X 6-9/16" X 1-3/4" RAB	7-1/4" 1-1/4" X 7-1/4" X 1-3/4" RAB	7-1/4" 1-1/4" X 7-1/4" X 1-3/8" RAB	

FINGER JOINT 20 MIN FIRE LABEL



EXTERIOR KERF JAMB

4-9/16" 1-1/4" X 4-9/16" X 2-1/8" KERF	5-3/4" 1-1/4" X 5-3/4" X 2-1/8" KERF
6-9/16" 1-1/4" X 6-9/16" X 2-1/8" KERF	7-3/8" 1-1/4" X 7-3/8" X 2-1/8" KERF
8-7/8" 1-1/4" X 8-7/8" X 2-1/8" KERF	

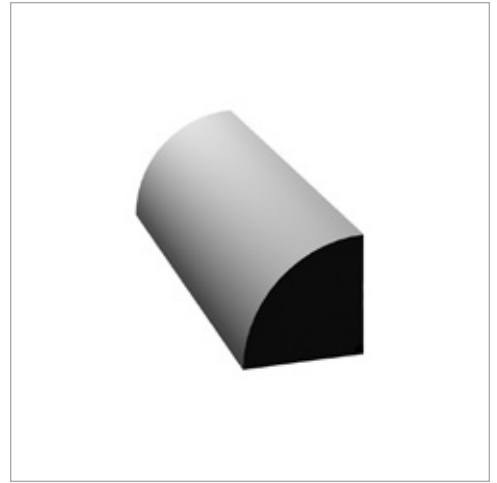
FINGER JOINT MOULDINGS



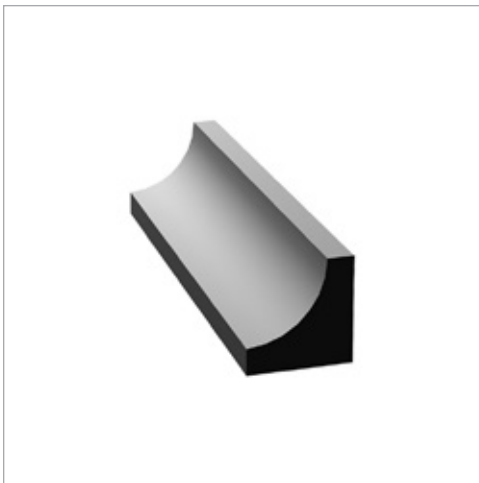
P-606
7/16" X 2-1/4"
PCS/BDL: 20/16'



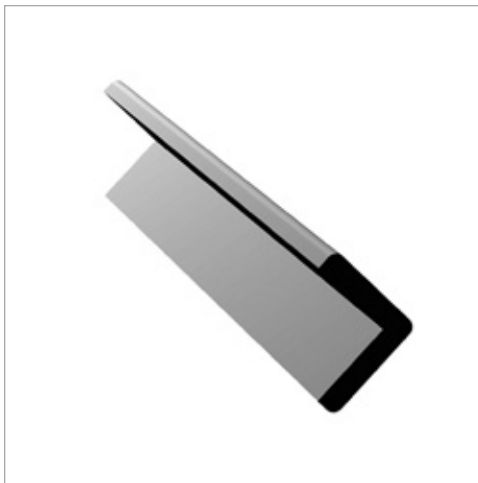
P-970
3/8" X 2-1/4"
PCS/BDL: 10/14'



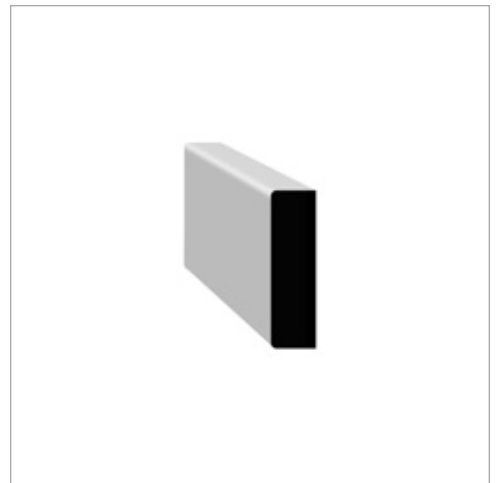
P-3206
11/16" X 11/16"
PCS/BDL: 20/16'



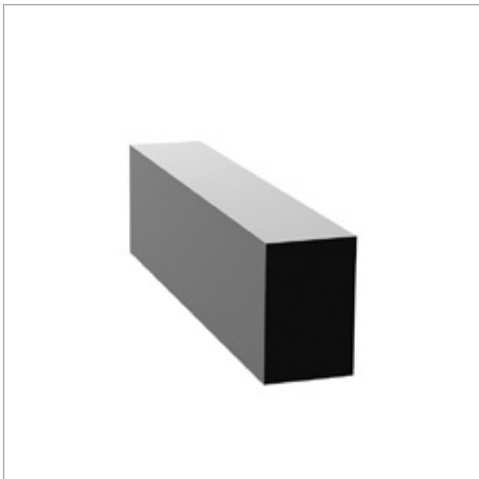
P-3264
11/16" X 11/16"
PCS/BDL: 20/16'



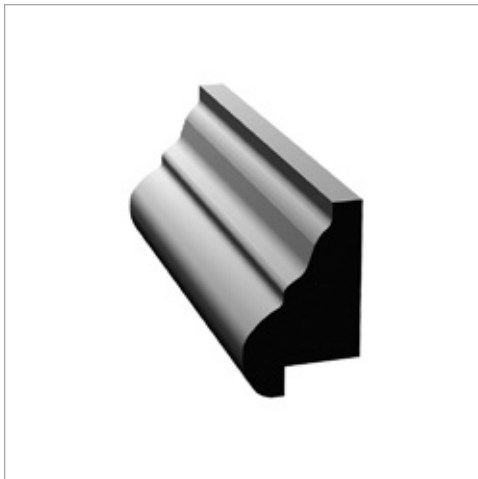
P-3280
1-1/16" X 1-1/16"
PCS/BDL: 20/16'



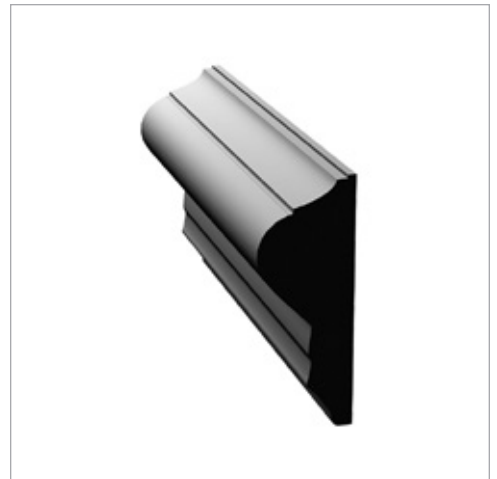
P-3206
11/16" X 11/16"
PCS/BDL: 20/16'



P-3428
1/2" X 3/4"
PCS/BDL: 30/14'



P-S107
11/16" X 1-1/4"
PCS/BDL: 20/16'



P-S112
11/16" X 1-7/8"
PCS/BDL: 20/16'

FINGER JOINT MOULDINGS



P-277
7/8" X 1-1/4"
PCS/BDL: 20/16'

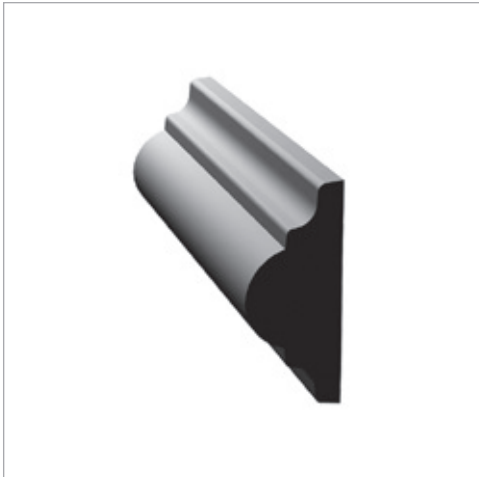


P-278
1-1/16" X 1-3/4"
PCS/BDL: 12/16'



P-298
7/8" X 2"
PCS/BDL: 12/16'

CHAIR RAIL / PANEL MOULD

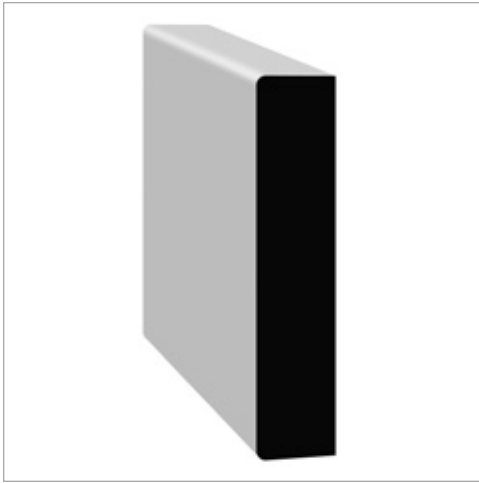


T-221
11/16" X 1-1/2"
PCS/BDL: 4/16'



T-297
11/16" X 3"
PCS/BDL: 6/16'

FLAT STOCK



E2E MDF FLAT STOCK

1X2
11/16" X 1-1/4"
PCS/BDL: 12/14'

1X5
11/16" X 4-9/16"
PC./16'

1X8
11/16" X 7-1/4"
PC./16'

1X3
11/16" X 2-1/2"
PCS/BDL: 6/16'

1X6
11/16" X 5-1/2"
PC./16'

1X10
11/16" X 9-1/4"
PC./16'

1X4
11/16" X 3-1/2"
PC./16'

1X7
11/16" X 6-9/16"
PC./16'

1X12
11/16" X 11-1/4"
PC./16'

FINGER JOINT FLATSTOCK



1X2
11/16" X 1-3/8"
PCS/BDL: 20/14'

1X5
11/16" X 4-9/16"
PCS/BDL: PC./ 16'

1X8
11/16" X 7-1/4"
PCS/BDL: PC./ 16'

1X3
11/16" X 2-1/2"
PCS/BDL: PC./ 16'

1X6
11/16" X 5-1/2"
PCS/BDL: PC./ 16'

1X10
11/16" X 9-1/4"
PCS/BDL: PC./ 16'

1X4
11/16" X 3-1/2"
PCS/BDL: PC./ 16'

1X7
11/16" X 6-9/16"
PCS/BDL: PC./ 16'

1X12
11/16" X 11-1/4"
PCS/BDL: PC./ 16'



2018 MOULDINGS

NANAIMO

4101 MOSTAR ROAD
NANAIMO, BC V9T 5V1
PH: 250-751-1441

FX: 250-751-1442

DOUG MCGLENNEN - DMCGLENNEN@TAIGABUILDING.COM
MARSHALL HALL - MHALL@TAIGABUILDING.COM

LANGLEY

26848 GLOUCESTER WAY
LANGLEY, BC V4W 3V6
PH: 604-857-7741

FX: 604-857-7781

US/BC WATTS: 1-866-816-7741

ERIC CARTER - ECARTER@TAIGABUILDING.COM
GREG BOURASSA - GBOURASSA@TAIGABUILDING.COM
CHERYL DELMARK - CDELMARK@TAIGABUILDING.COM

KELOWNA

2545 ACLAND ROAD
KELOWNA , BC V1X 7J4
PH: 250-765-7714

FX: 250-765-7760

RANDY HICKSON - RHICKSON@TAIGABUILDING.COM
KELLY BOSKILL - KBOSKILL@TAIGABUILDING.COM

We endeavour to update our product guides and informational materials on a regular basis. As design taste and technology changes we may also have new products that don't make it into a printed piece. Please contact your Taiga representative for all the latest inventory and specials that suit your business requirements.

taiga
building products

Whatever it takes.

taigabuilding.com